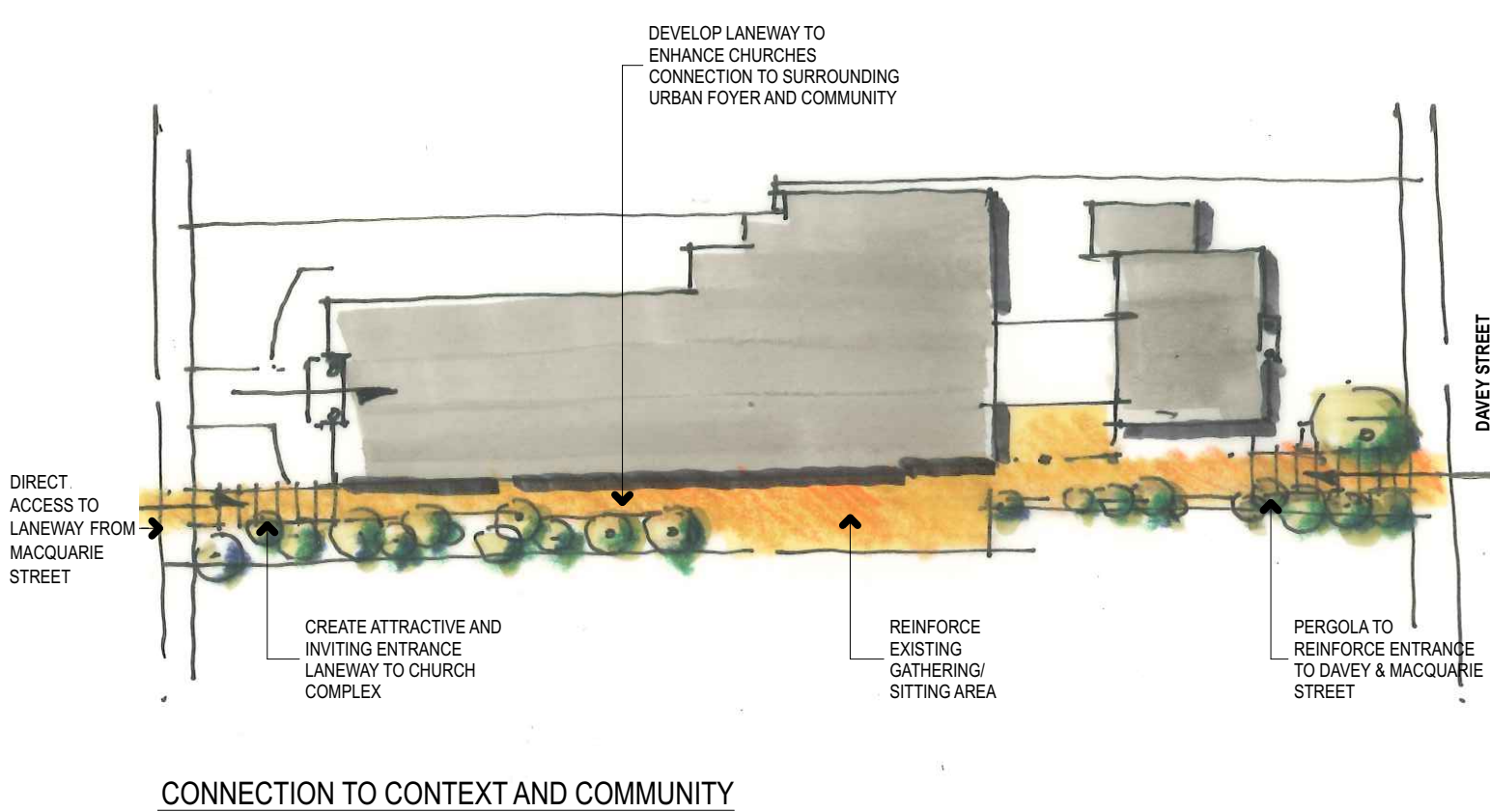
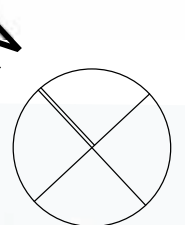
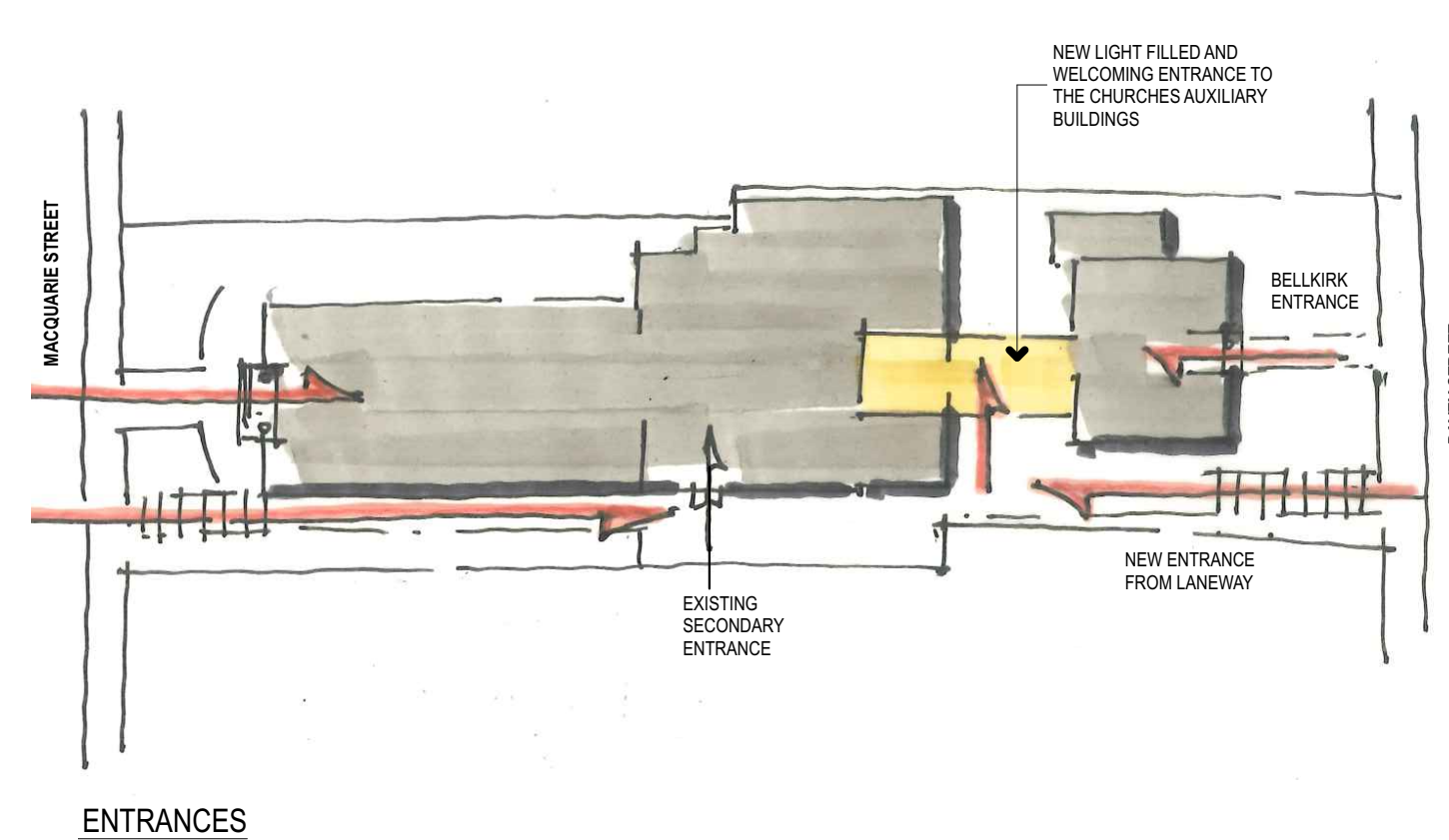


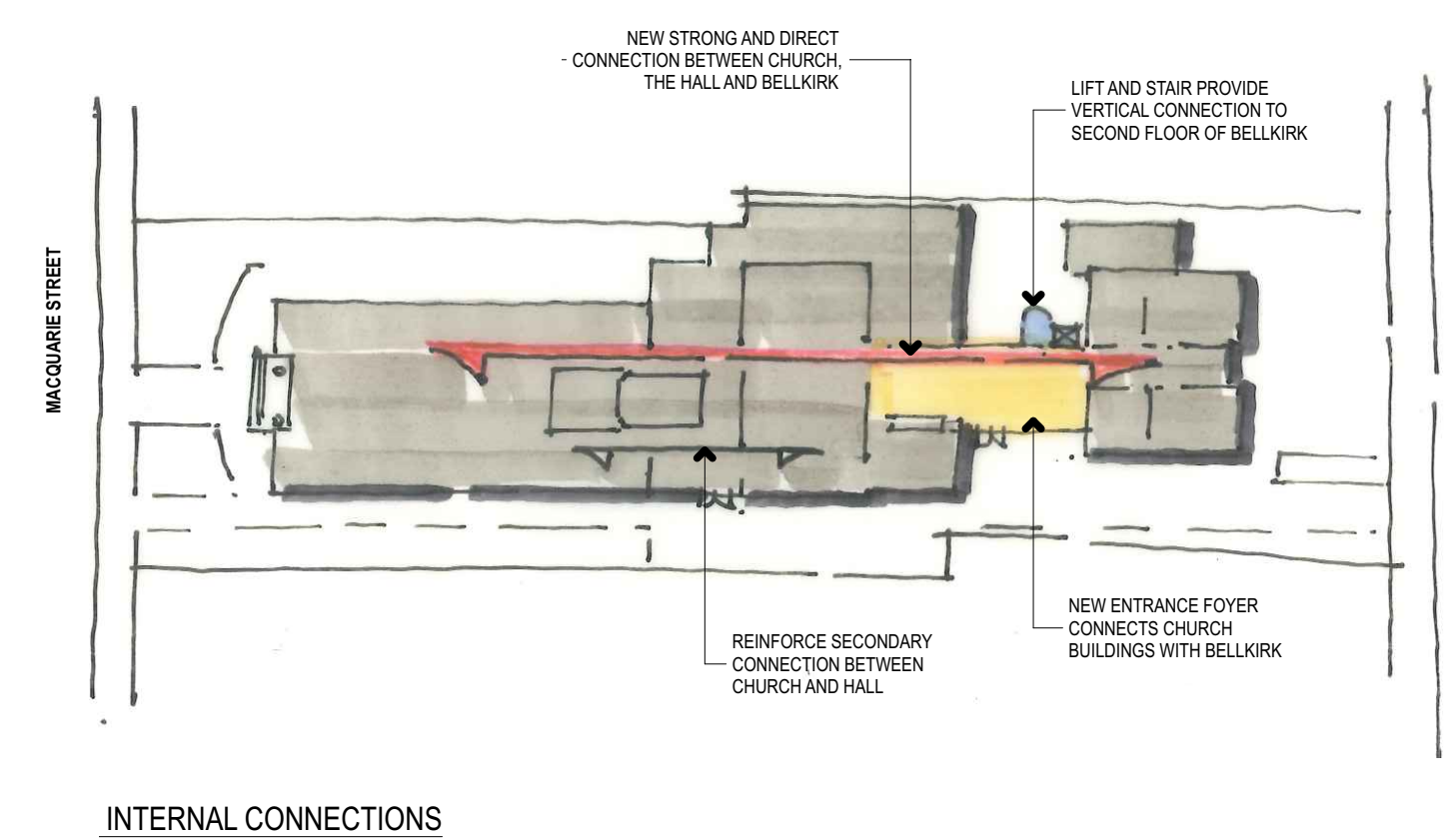
GROUND FLOOR PLAN
1:100 @ A1



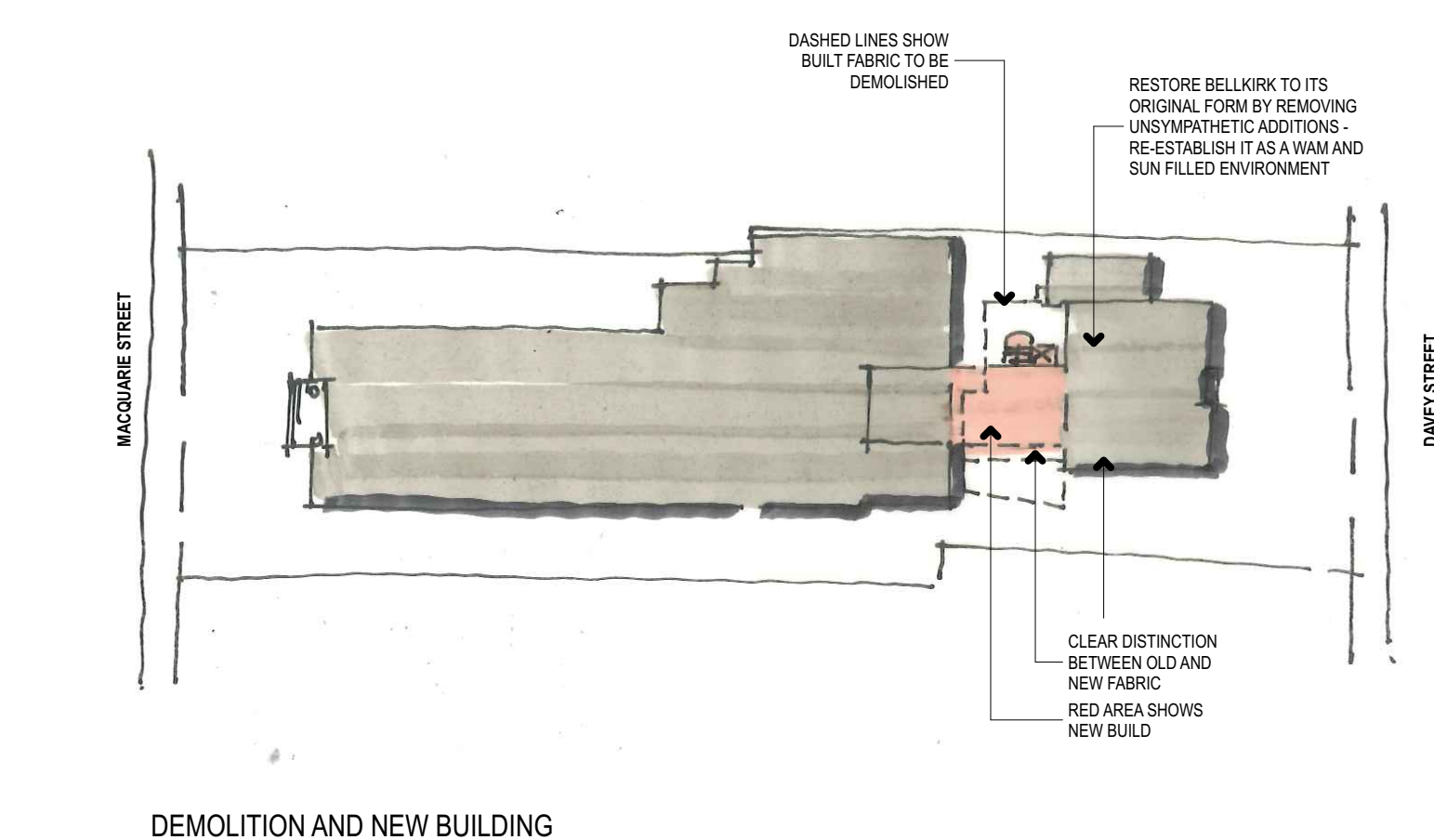
CONNECTION TO CONTEXT AND COMMUNITY



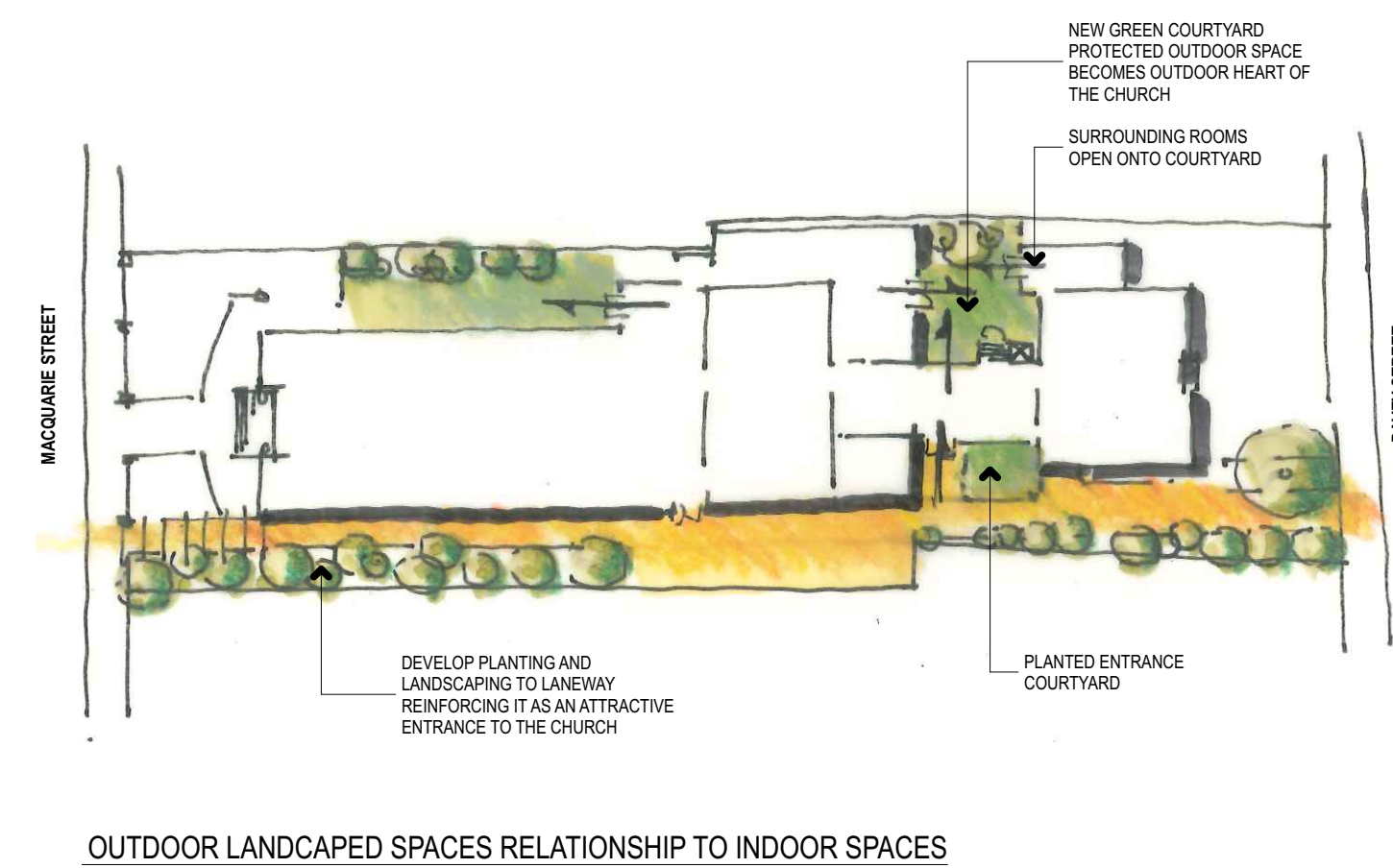
ENTRANCES



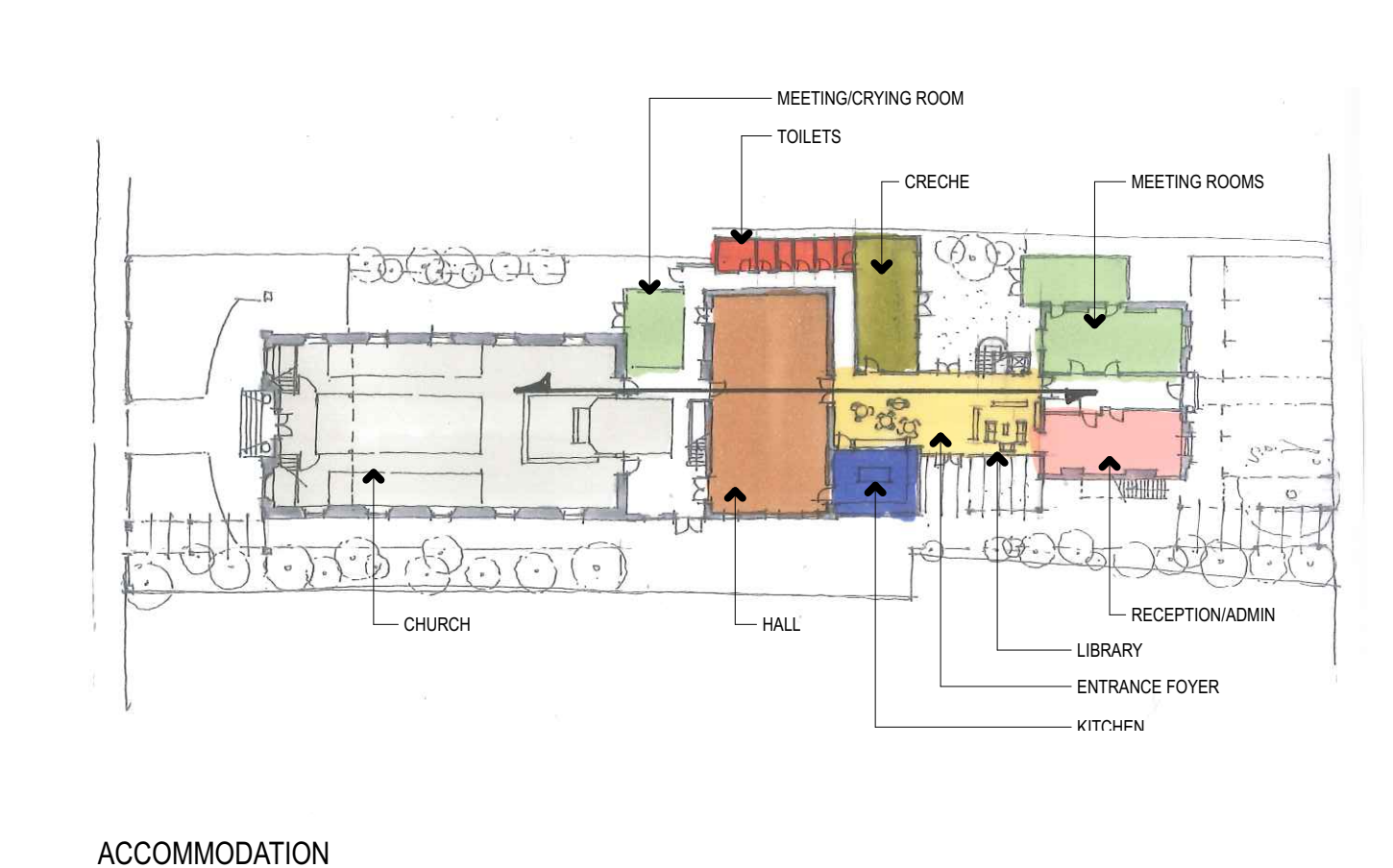
INTERNAL CONNECTIONS



DEMOLITION AND NEW BUILDING



OUTDOOR LANDSCAPED SPACES RELATIONSHIP TO INDOOR SPACES



ACCOMMODATION

The mid – block city site extends between Davey Street and Macquarie Street in Hobart. Significant heritage buildings, Bellkirk, the former manse, and the St. John's Presbyterian Church occupy separate street frontages. The master plan vision was determined by a consultative, site - specific approach, and achieves an overall design that is unique to the context and to the requirements of the brief. Flexible phasing addresses different budget options and the need for spatial function to meet changing short and long - term needs. Spatial and visual connections on a multitude of levels support social connection and an inclusive community, with spiritual, social and cultural expression and exchange, and a strong sense of place, belonging and community purpose at the heart of the design. Easy physical access for all ages and abilities is essential throughout, as are friendly and inviting transitional zones between the public realm and pastoral / church community activities. Heritage conservation requirements are respected and a consistent architectural language creates an uplifting atmosphere and incorporates environmentally sustainable design (ESD) throughout.

St. John's Presbyterian Church Master Plan



morrison & breytenbach architects