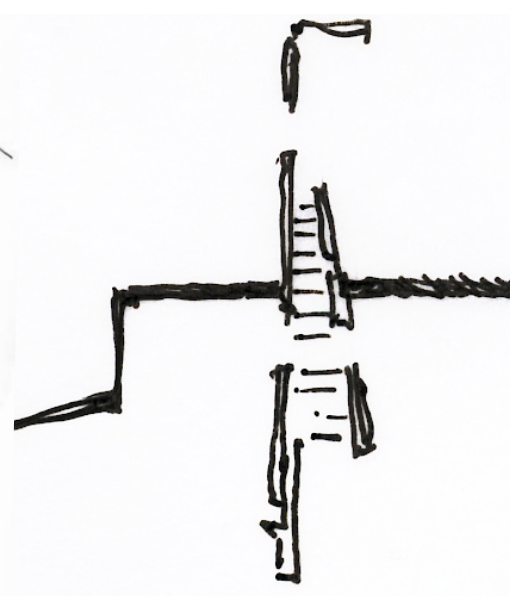


WATER'S EDGE TO WATER SOURCE
SPUCE acknowledges the original junction of Hobart Rivulet and the River Derwent. The Scheme recognises the original shoreline of Sullivan's Cove by re-introducing the water to part of Durrn Place.

SPUCE utilises physical and visual connecting axes and vistas to link the Derwent River, the Waterfront, Hobart Rivulet and its source at Mount Wellington. The vista from the Pier across the Derwent links the City to the Eastern Shore.

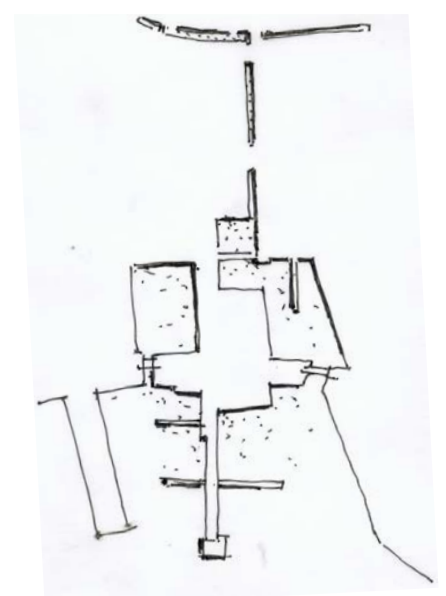
Insertions include the Derwent River Aquarium and Research laboratories, the remodeled King's Pier, the Maritime Museum and Floating Exhibits Dock. Restaurants and cafes complement the existing takeaway fish pontoons, which are given covered informal seating areas. The Hobart Rivulet Canal with its Canal Walks and River Punks provide the urban river experience.



EDGE, GRID AND GROUND FIGURE LINES
SPUCE intersects the existing built waterfront edge and city street grid to connect waterfront and city and link with angled wharf shed ground figure lines.

SPUCE utilises physical and visual connecting axes and vistas to link the Derwent River, the Waterfront, Hobart Rivulet and its source at Mount Wellington. The vista from the Pier across the Derwent links the City to the Eastern Shore.

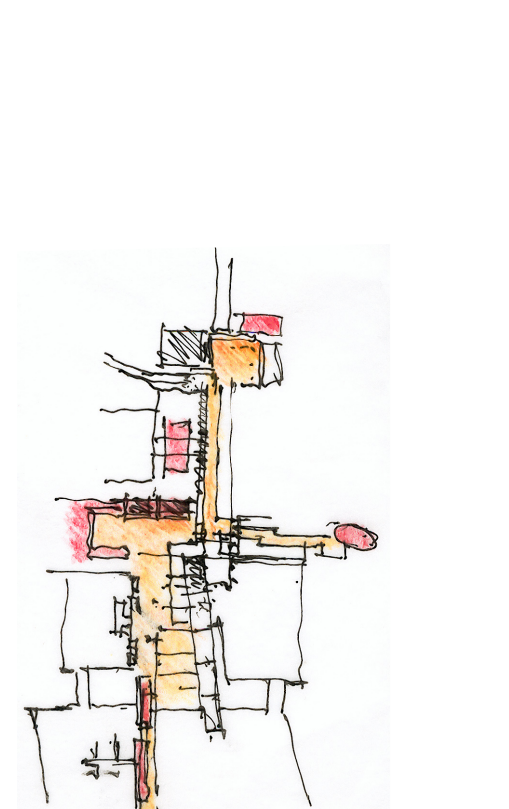
Insertions include the Derwent River Aquarium and Research laboratories, the remodeled King's Pier, the Maritime Museum and Floating Exhibits Dock. Restaurants and cafes complement the existing takeaway fish pontoons, which are given covered informal seating areas. The Hobart Rivulet Canal with its Canal Walks and River Punks provide the urban river experience.



PLATFORMS AND CUTOUTS
SPUCE extends the existing waterfront platforms of Franklin Wharf and water-filled cut-outs (the docks) to the city.

SPUCE utilises physical and visual connecting axes and vistas to link the Derwent River, the Waterfront, Hobart Rivulet and its source at Mount Wellington. The vista from the Pier across the Derwent links the City to the Eastern Shore.

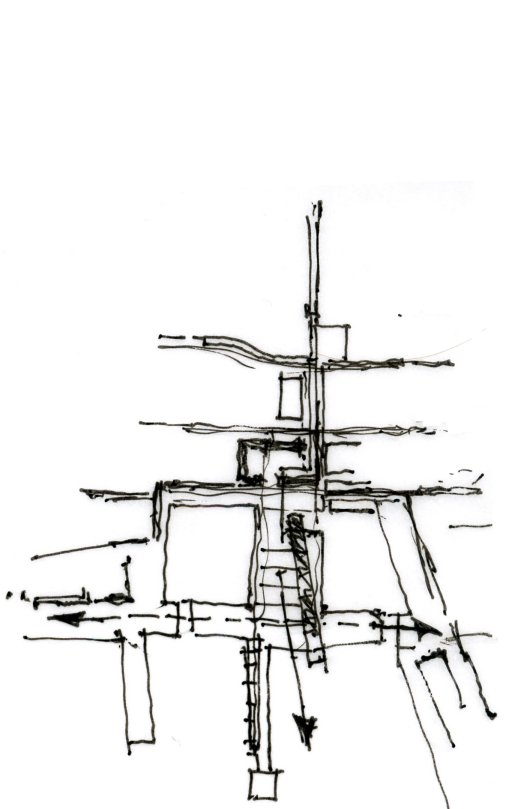
Insertions include the Derwent River Aquarium and Research laboratories, the remodeled King's Pier, the Maritime Museum and Floating Exhibits Dock. Restaurants and cafes complement the existing takeaway fish pontoons, which are given covered informal seating areas. The Hobart Rivulet Canal with its Canal Walks and River Punks provide the urban river experience.



THE CULTURAL AXIS
A wholly pedestrianised axial zone links the Waterfront, Concert Hall, the Tasmanian Museum and Art Gallery (TMAG), Hobart City Hall, the Theatre Royal and the City. Vehicular traffic and parking is taken underground providing easy immediate access. Sub-surface drainage infrastructure is considered to be justified by the immense benefits achieved by an above ground pedestrian only zone.

Cultural insertions include major new public spaces: Festival Place, Art and Heritage Place, and Performance Place. Dedicated supplementary spaces include The Mounheuer Space of Remembrance and Reconciliation, Sculpture and Water Courts and the Outdoor Amphitheatre for performing arts.

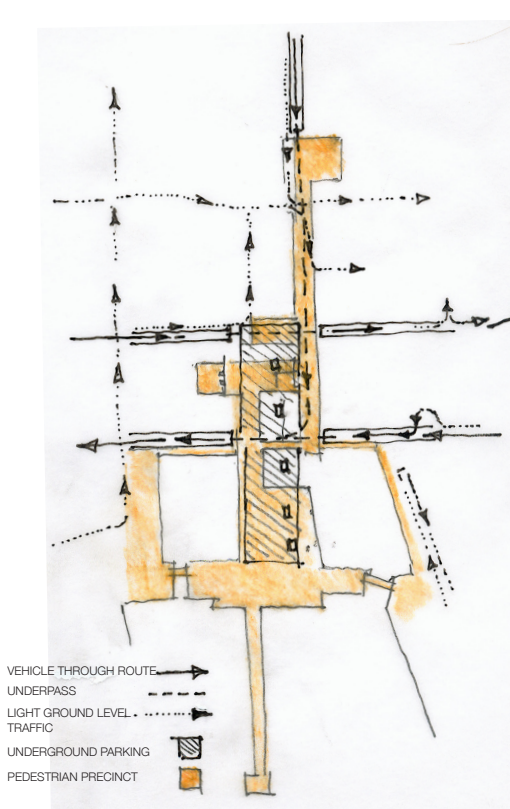
Cultural insertions include major new public spaces: Festival Place, Art and Heritage Place, and Performance Place. Dedicated supplementary spaces include The Mounheuer Space of Remembrance and Reconciliation, Sculpture and Water Courts and the Outdoor Amphitheatre for performing arts.



LATERAL LINKS
SPUCE includes a series of lateral links along the River Derwent to Salamanca Place and Hunter Island, as well as to the Concert Hall and the City.

Derwent River Promenade in conjunction with King's Pier Promenade celebrates linking people to the water's edge to "find their stuff", engage in recreation, relaxation and social interaction. Insertions along this pedestrian edge include seating and shelters and a dedicated cycle track.

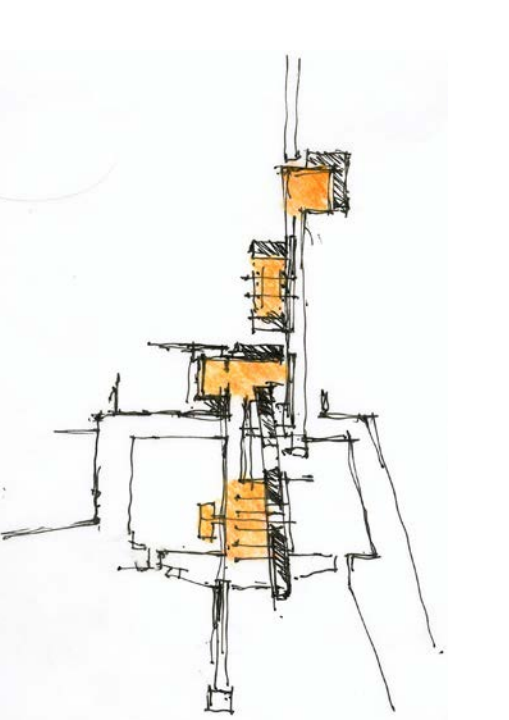
Secondary lateral pedestrian routes include designated pedestrian walkways, pedestrian bridges, canal walks and access to carparks.



CARPARKS AND TRAFFIC MANAGEMENT
Traffic is separated from the pedestrian precinct by an underpass system giving easy access to underground parking and the SPUCE precinct above. Carparks attract and disperse people through the precinct advantageously populating the area.

Lateral vehicular traffic flow links further afield from the North and the Eastern shore to the City and on to the South, the Channel and the Huon.

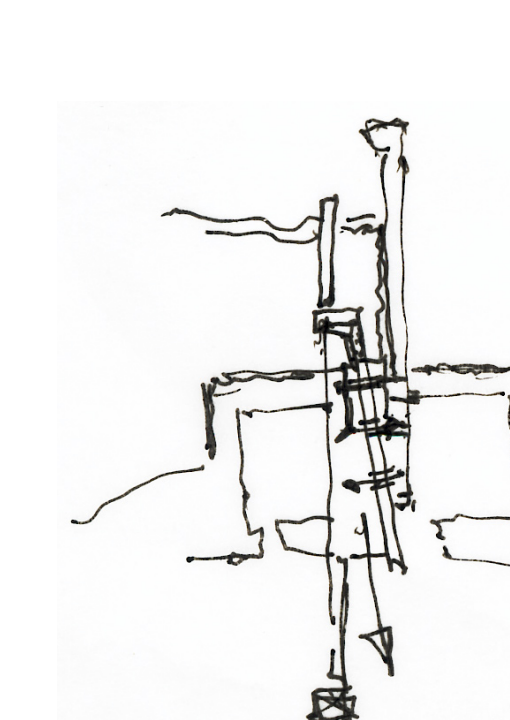
Lateral vehicular traffic flow links further afield from the North and the Eastern shore to the City and on to the South, the Channel and the Huon.



FOUR PUBLIC PLACES
1 Festival Place links the Waterfront, residents and visitors through festivals and festivities held on this large dockside open air platform with its large scale demountable festival sail shelters and mast like structures evocative of tall ships and sailing boats.

The Waterfront public open space provides a venue for the Sydney to Hobart Yacht Race, the Taste of Tasmania, the Wooden Boat Festival, fireworks displays and potential new events such as the Festival of Lights and the Blessing of the Fleet.

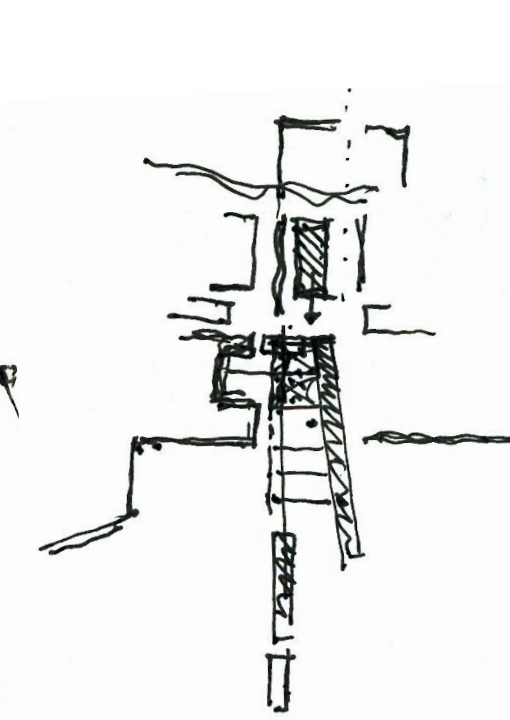
The Waterfront public open space provides a venue for the Sydney to Hobart Yacht Race, the Taste of Tasmania, the Wooden Boat Festival, fireworks displays and potential new events such as the Festival of Lights and the Blessing of the Fleet.



MAKING PUBLIC OPEN SPACE
SPUCE is a sequence of positive open spaces formed by new built buildings linking into the existing built fabric. The SPUCE design concept brings a contextually derived design approach and order to the insertion of new built form which is both yet sympathetic to the scale and texture of the existing built environment.

The Waterfront public open space provides a venue for the Sydney to Hobart Yacht Race, the Taste of Tasmania, the Wooden Boat Festival, fireworks displays and potential new events such as the Festival of Lights and the Blessing of the Fleet.

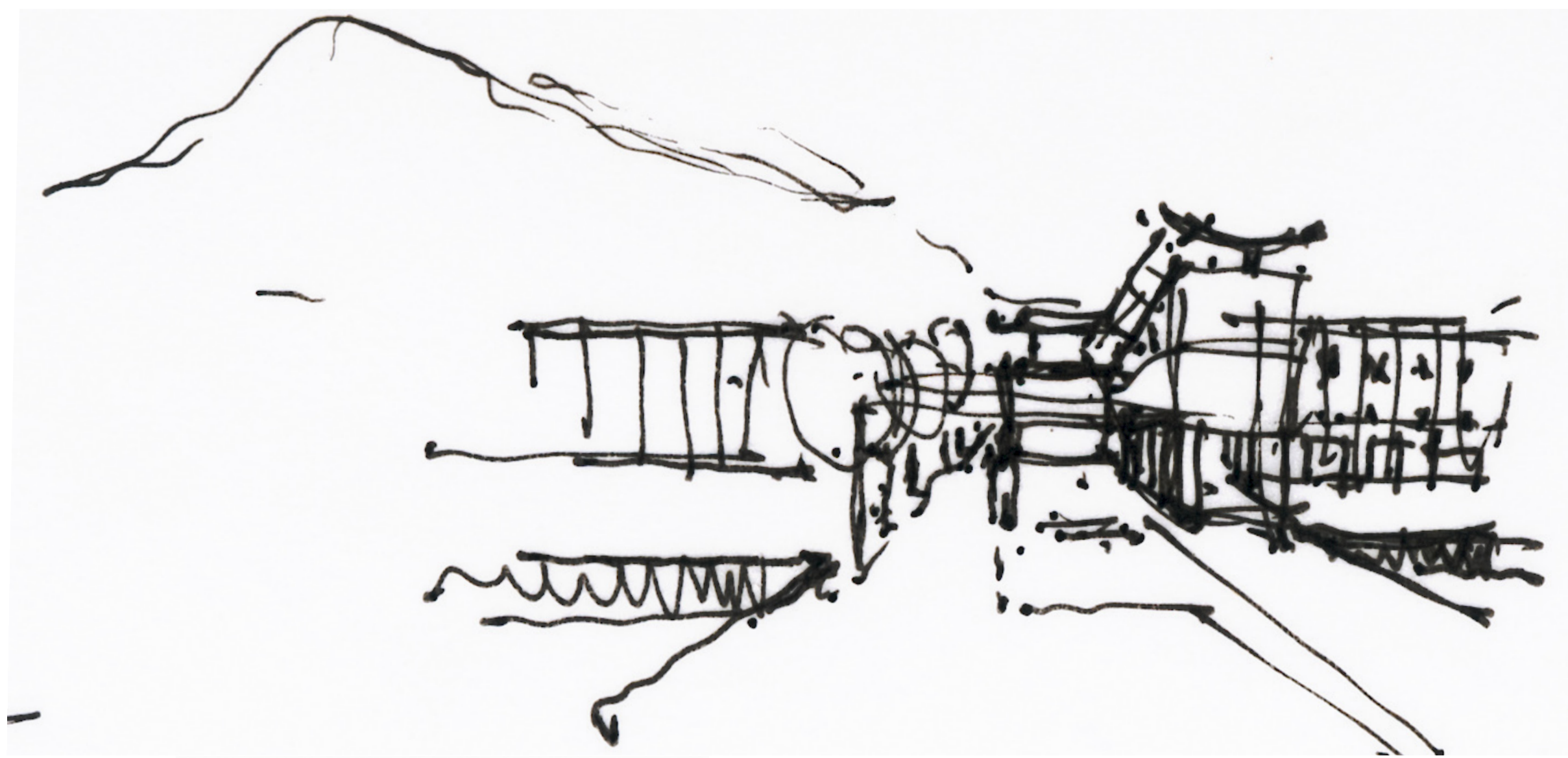
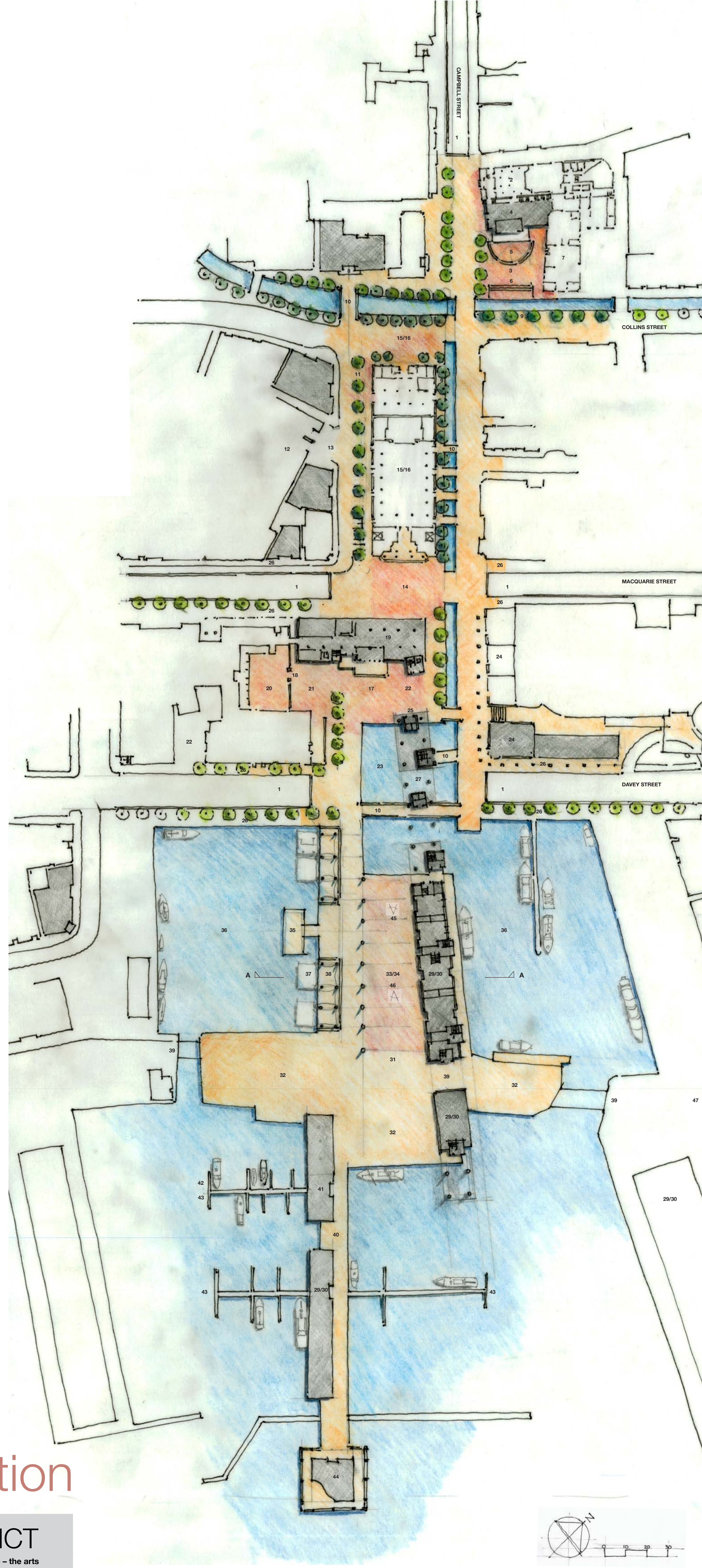
The Waterfront public open space provides a venue for the Sydney to Hobart Yacht Race, the Taste of Tasmania, the Wooden Boat Festival, fireworks displays and potential new events such as the Festival of Lights and the Blessing of the Fleet.



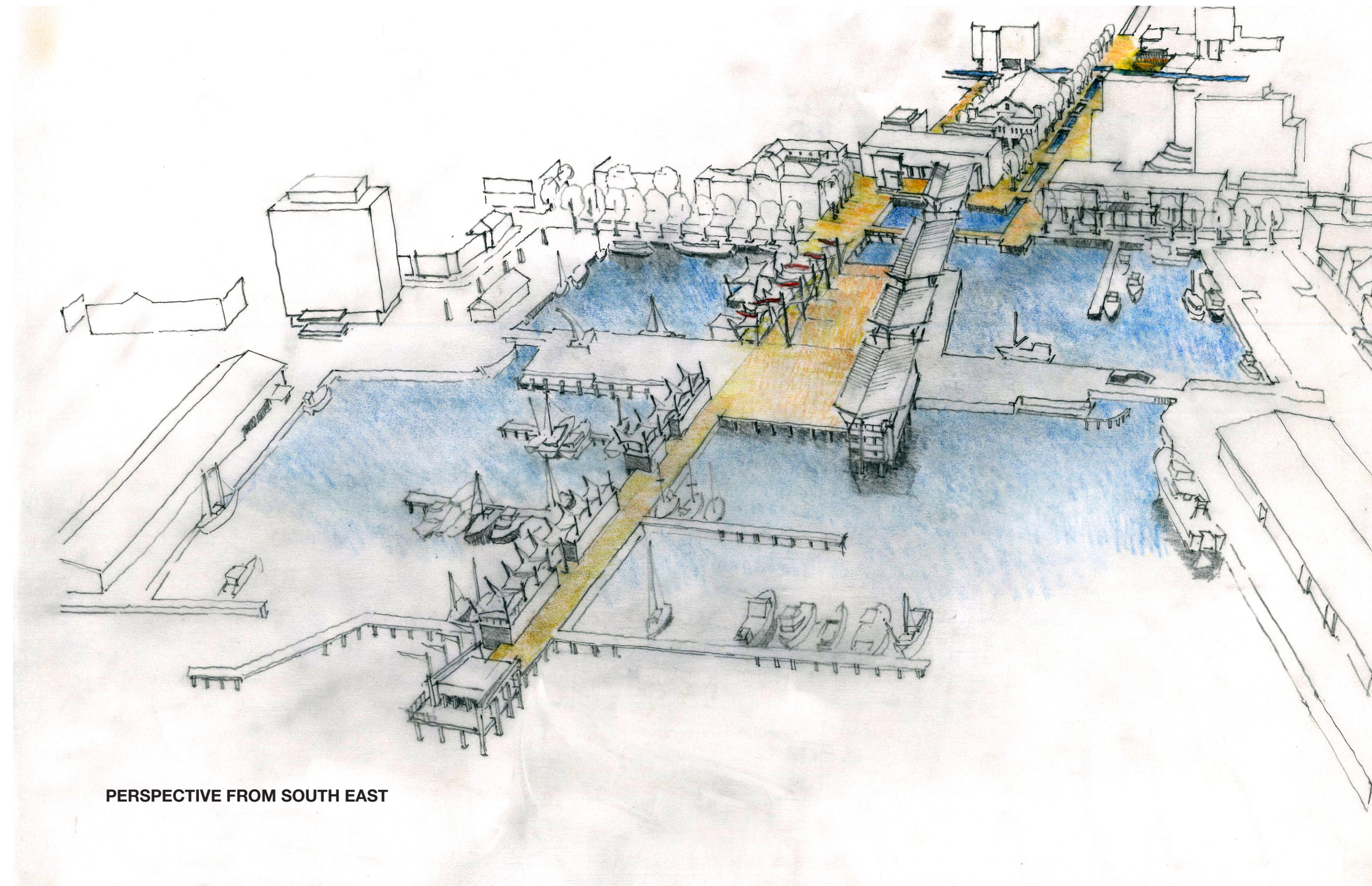
NEW RESIDENTIAL AND COMMERCIAL
SPUCE sustains and is sustained by the insertion of new residential buildings whose occupants populate and enliven the precinct at all times of the day and night. Small scale commercial outlets have the opportunity to operate here and to tap into a potential niche market, whilst complementing existing businesses and bolstering economic activity in the precinct.

The Waterfront public open space provides a venue for the Sydney to Hobart Yacht Race, the Taste of Tasmania, the Wooden Boat Festival, fireworks displays and potential new events such as the Festival of Lights and the Blessing of the Fleet.

The Waterfront public open space provides a venue for the Sydney to Hobart Yacht Race, the Taste of Tasmania, the Wooden Boat Festival, fireworks displays and potential new events such as the Festival of Lights and the Blessing of the Fleet.



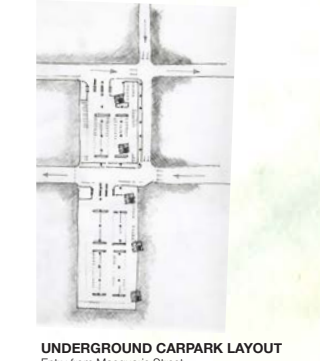
AXIAL VIEW TOWARDS ART AND HERITAGE PLACE



PERSPECTIVE FROM SOUTH EAST

KEY

- 1 Water Underpass
- 2 Theatre Royal
- 3 Performance Place (Theatre Royal)
- 4 Theatre Royal Extension including Lobby
- 5 New Civic Building
- 6 Outdoor Performance Amphitheatre
- 7 Festival Place
- 8 Festival Place
- 9 Festival Place
- 10 Festival Place
- 11 Festival Place
- 12 Festival Place
- 13 Festival Place
- 14 Festival Place
- 15 Festival Place
- 16 Festival Place
- 17 Festival Place
- 18 Festival Place
- 19 Festival Place
- 20 Festival Place
- 21 Festival Place
- 22 Festival Place
- 23 Festival Place
- 24 Festival Place
- 25 Festival Place
- 26 Festival Place
- 27 Festival Place
- 28 Festival Place
- 29 Festival Place
- 30 Festival Place
- 31 Festival Place
- 32 Festival Place
- 33 Festival Place
- 34 Festival Place
- 35 Festival Place
- 36 Festival Place
- 37 Festival Place
- 38 Festival Place
- 39 Festival Place
- 40 Festival Place
- 41 Festival Place
- 42 Festival Place
- 43 Festival Place
- 44 Festival Place
- 45 Festival Place
- 46 Festival Place
- 47 Festival Place



UNDERGROUND CARPARK LAYOUT

Hobart Waterfront International Design Competition