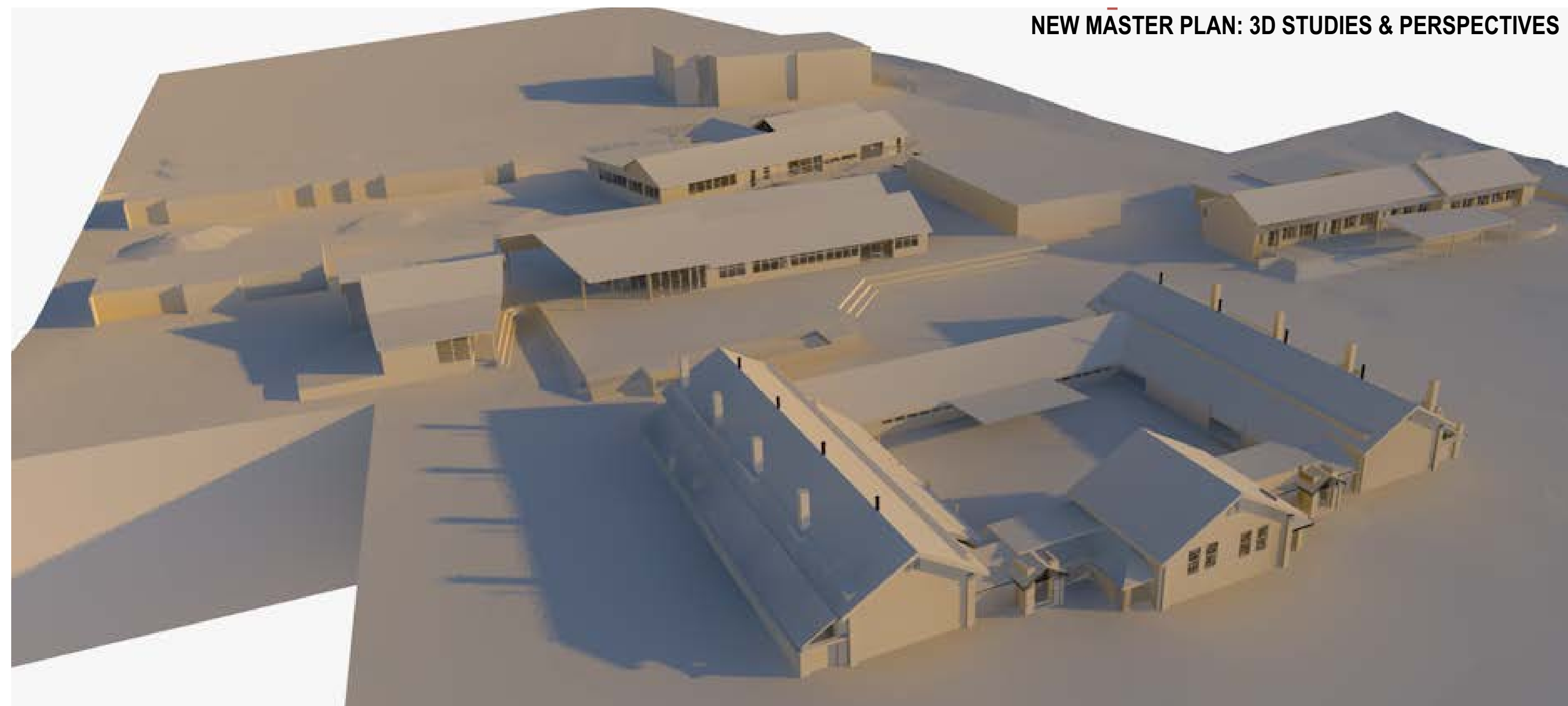


The Glenorchy Primary School master plan organises the staged upgrade and expansion of the school balancing aspirational, educational, support and administration needs and budgetary constraints.

An in depth consultation process informed the design vision to achieve a school image, identity and facilities to be proud of within a safe, inclusive, non-institutional environment reflecting a non-hierarchical approach and commitment to working together.

The master plan addresses:



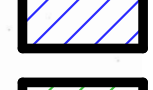


- easy way finding
- good lines of sight
- strong inside-outside connections
- flexible space for multiple uses
- low maintenance solutions
- spatial options for different cultural habits
- learning through nature
- landscaping for making spaces

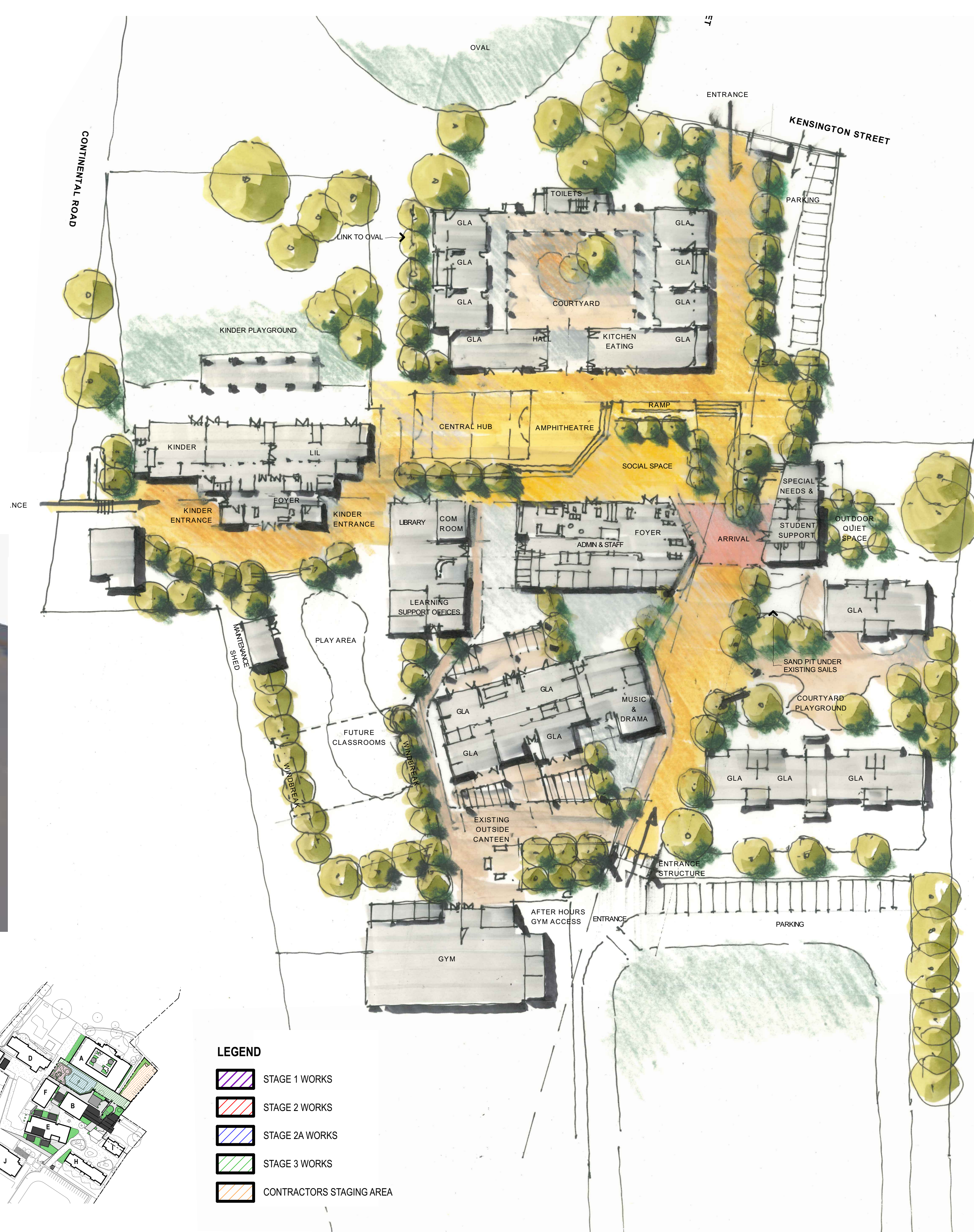


NEW MASTER PLAN: 3D STUDIES & PERSPECTIVES



#### LEGEND

-  STAGE 1 WORKS
-  STAGE 2 WORKS
-  STAGE 2A WORKS
-  STAGE 3 WORKS
-  CONTRACTORS STAGING AREA



# Glenorchy Primary School Master Plan



morrison & breytenbach architects